

# PARTITION SYSTEMS

## DOOR SETS

---

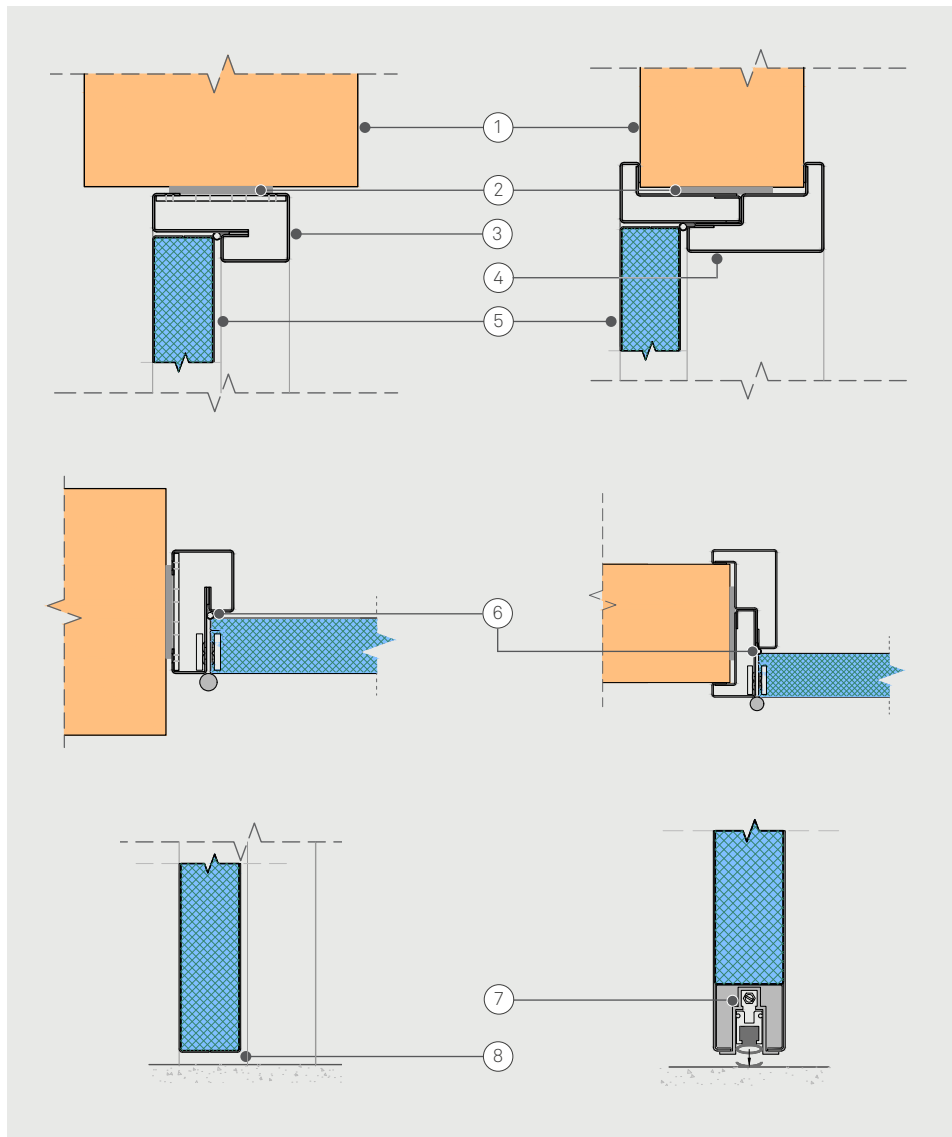
### THIRD PARTY WALLS



## TECHNICAL SPECIFICATION

# DOOR SETS

## THIRD PARTY WALLS



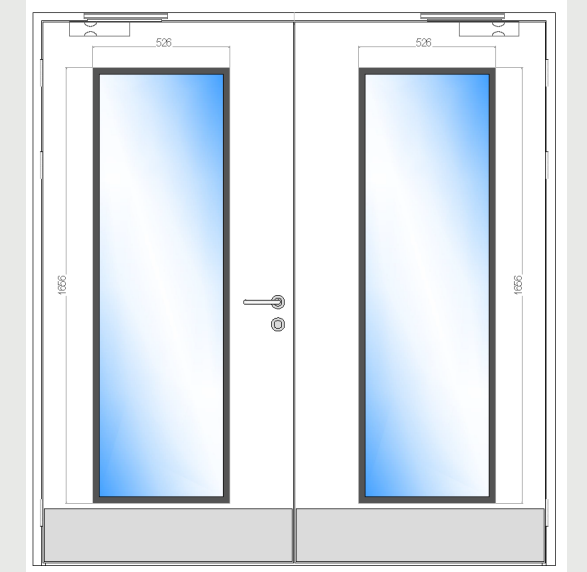
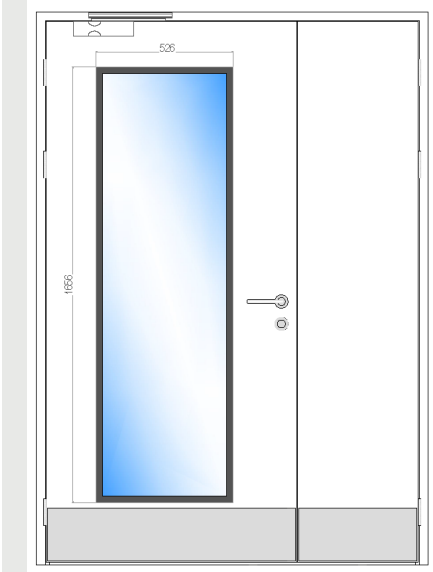
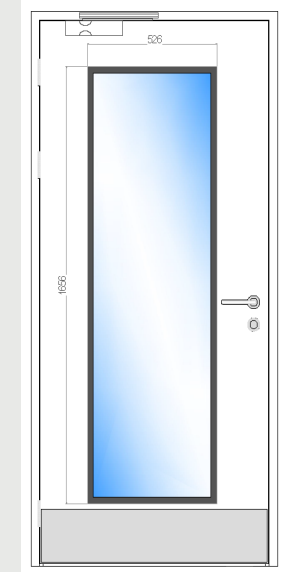
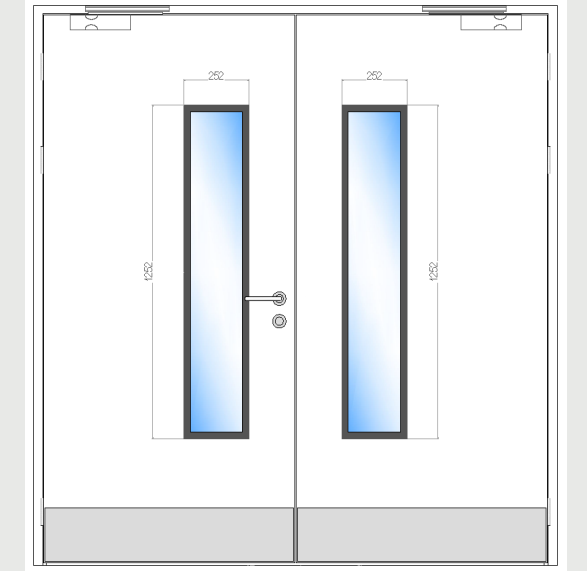
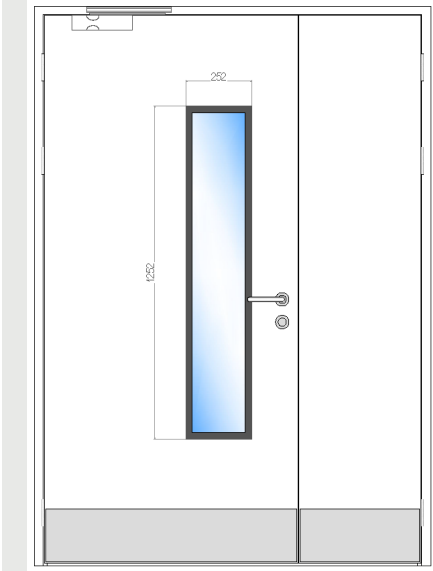
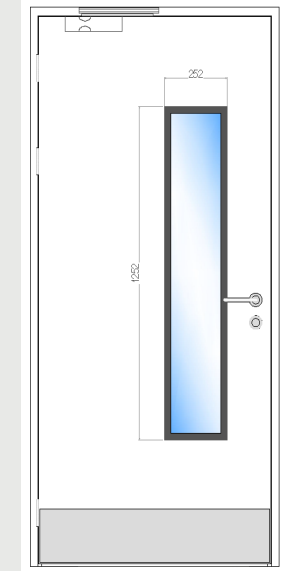
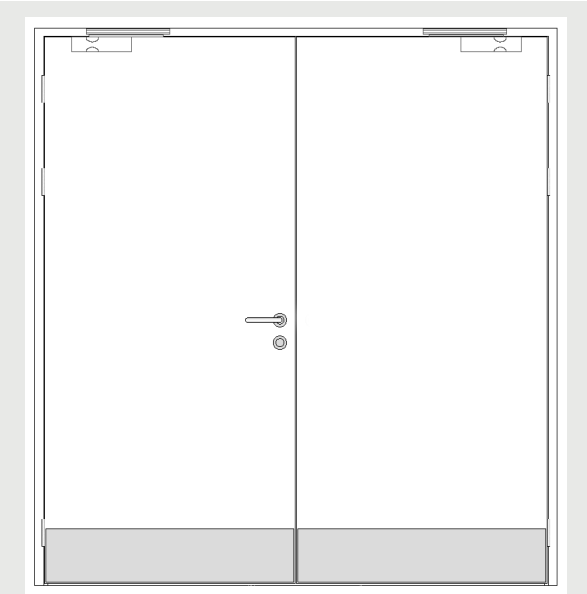
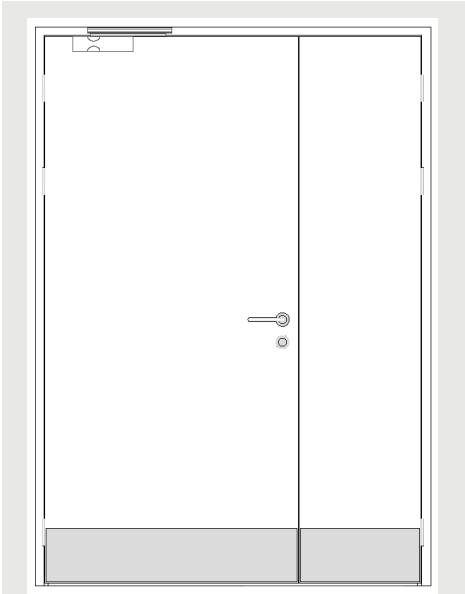
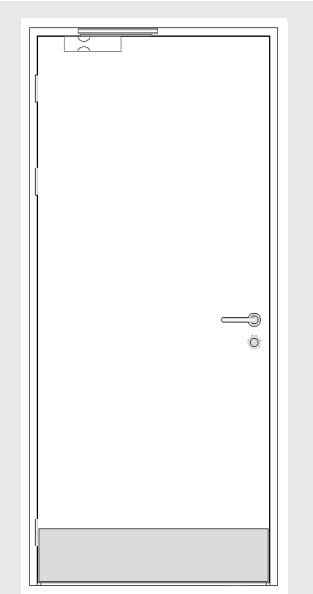
LEGEND	
1	Third Party Wall
2	Frame Shim
3	Door Frame
4	Wraparound Door Frame
5	Door Assembly
6	Door Seal
7	Drop Seal (optional)
8	10mm Gap

## SPECIFICATION FEATURES

- Polyester powder coated, mild steel door skins.
- Options for solid doors and doors with vision panels, with DDA compliant as standard.
- Factory prepared for ironmongery and door automation, with optional integrated maglocks and traffic lights.

# TECHNICAL SPECIFICATION

DOOR SETS | THIRD PARTY WALLS



DOOR SETS	
Dimensions	Single Leaf: 1000mm x 2100mm Leaf & Half: 1500mm x 2100mm Double Leaf: 2000mm x 2100mm Bespoke Width: 2200mm MAX (Double Doors) Bespoke Height: 2700mm MAX (All Doors)
Clear Opening	900mm
Glazing	Fully Glazed: 526mm x 1656mm DDA Glazed (Standard): 252mm x 1252mm
Thickness (Leaf)	45mm
Finish	Powder coated for internal or external application
Weight	18kg/m <sup>2</sup> (Solid Leaf)
Assembly	Bonded construction forming composite assembly with mild steel door skins and frames, integral hinges and lock mounts
Frame Details	Mild steel wraparound profiles
Glass Options	Flush bonded glass with FR or NFR options
Door Furniture	Stainless steel as standard with options for: Lever handles D pull handles and push plates Escape furniture Closers Kick plates Sash / dead locks Latches Cylinders Flush bolts Perimeter seals
Options	Alternative door furniture / ironmongery to suit project specification Door thresholds and astragals Integrated maglocks Integrated drop seals Integrated traffic lights

PERFORMANCE	
Fire	E 60 or E 30 to BS 476-22
Acoustic	28dB to BS EN ISO 140-3:1995
Structural	Heavy Duty to BS 5234: Part 2 tested within M100 system 100 impacts at 65kg 100,000 slam cycles
Thermal (U-Value)	2.0W/m <sup>2</sup> K