

GLOBAL ENGINE MANUFACTURER DARLINGTON, UK

Project Overview

Project	Two storey amenity and training block
Location	County Durham, UK
Freestanding	Amenities for factory personnel
Application	
Walls	M100 (FR60, NFR)
Ceilings	M-WOC, MCT, acoustic in offices
Doors	Single/double leaf (FR60; NFR); fully glazed DDA; bespoke sliding doors
Glazing	Flush glazed vision panels (FR60; NFR)
Miscellaneous	MIDDAS partitions with acoustic infill
Performance	Structure (Heavy Duty BS 5234 Part 2)

Background

The client commissioned a modern amenity and training facility as part of their continued investment in factory staff welfare. The intent was to provide the same high standard of amenities for all staff, regardless of where they worked within the organisation. The new facilities would give shop floor staff the same experience as office staff.

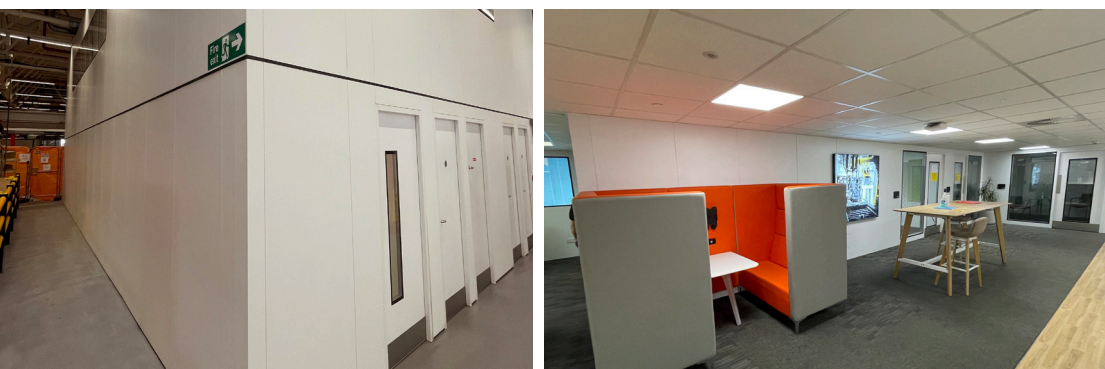
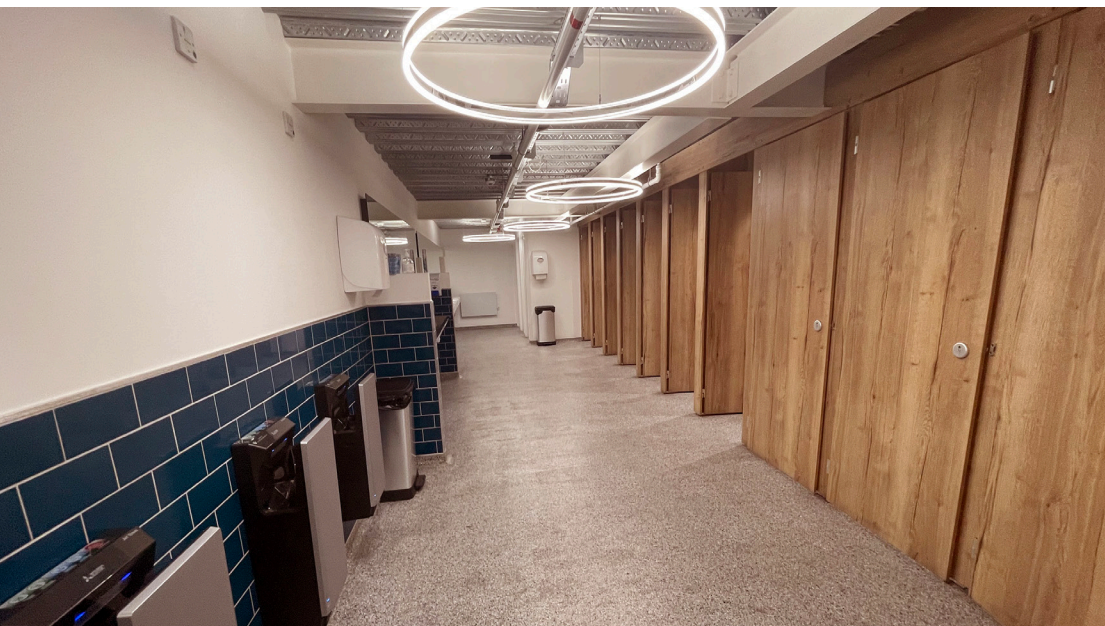
Brief

The new amenity block was to follow the proven solution for the previous MIDDAS two storey engineering and maintenance mezzanine. Emphasis was placed on the quality of the amenities and additional training facilities for factory staff.

Solution

Similar to the previous solution, Overbury installed a single storey mezzanine structure that was finished with MIDDAS partitions. These were extended to create the second level using MIDDAS beams to support the first floor services and ceiling system below. This kept additional load off the building structure.

The internal MIDDAS dividing walls created the amenity and training rooms, with both areas fitted out by Overbury using high quality sanitary ware and office furniture.



“We continued our successful relationship with Overbury and MIDDAS to deliver the next phase of our site redevelopment, which would ensure we maintained our high standard throughout the facility.”

**Steve James, Facilities Manager
Overbury**